

# Coin Street Conference Centre

Book your conference.  
Empower our community.



# Contents

Impact of your booking	3
Third Floor Suite	4
Third Floor Suite – Lil Patrick & Fred Miller	5
Third Floor Suite – Floor Plan	6
Neighbourhood Room	7
Neighbourhood Room – Floor Plan	8
South Bank Suite	9
South Bank Rooms 1 & 2	10
South Bank Suite & Rooms – Floor Plan	11
Roof Terrace	12
Palm Meeting Room	13
Sustainability & accessibility	14
Catering	15
Client testimonials	16
Additional spaces to hire	17
Finding us & get in touch	18





# Impact of your booking

## Welcome to Coin Street

We're a social enterprise working to protect, build and galvanise our neighbourhood in Waterloo and North Southwark, London.

Starting from a rundown site in 1984, together we've built a thriving community of opportunity. It's a place people can call their home, workplace, or playground – and above all, it's a place where they can be totally themselves.

To make our mission possible, we generate income from commercial activity, including through the Coin Street Conference Centre. This means that every booking you make fuels something bigger: it helps protect, strengthen, and uplift our local community.

## What your booking powers

Every booking directly supports a vibrant network of community-led initiatives, including:

---

Welcoming coffee mornings, gardening groups, and art sessions

---

Co-operative housing for local residents

---

Youth programmes like Young Leaders, mentorship, and youth gym

---

Family and Children's Centre offering workshops, support sessions, and more

---

Affordable studio spaces for independent designers and makers at Oxo Tower Wharf

---

A Living London Wage for all our employees

## And that's just the beginning.

Your booking helps fuel creativity, connection, and opportunity across our community.



# Third Floor Suite

The Third Floor Suite is a flexible, hybrid-ready space designed to bring people together—whether in person, online, or both. The main room seats up to 170 guests theatre-style or 100 cabaret-style, making it ideal for keynotes, presentations, and plenary sessions.

It's fully equipped with advanced AV tech: dual projectors and screens, microphones, HD cameras, and integrated speakers ensure seamless hybrid events and clear communication.

Two adjoining syndicate rooms offer added versatility for breakout sessions, catering, or refreshments. Each includes a full hybrid setup and large plasma screens so remote participants stay engaged.

The suite also features a private cloakroom and a bright foyer—perfect for registration or drinks. All spaces benefit from natural daylight.

AV is included in the hire, with no hidden costs. Live streaming or recording is available for a small additional fee.



## AV facilities included in the room hire

HDMI and wireless Barco Clickshare connectivity

Dual 1080p projector screens

Laptop

WiFi

PA system with 6 handheld microphones and 1 lapel

Hybrid meeting capabilities; 2 high-definition hybrid capable cameras, ceiling mounted microphones and speakers.

Recording your event or live streaming to YouTube available for an additional fee

Induction loop

Room dimensions:  
14.3m x 13.1m

## Capacities

Cabaret	100
Cabaret with stage	90
Banquet (10 tables of 11)	110
Theatre	170
Hollow square	50
Boardroom U-shape	40
Classroom	80
Standing reception	180

# Third Floor Suite Lil Patrick & Fred Miller

Fred Miller and Lil Patrick are purpose-built for focused meetings, equipped with high-speed Wi-Fi, plasma screens, ClickShare, and integrated cameras and microphones for seamless Teams or Zoom connectivity.

For conferences with more than 70 delegates, we recommend reserving at least one breakout room for catering throughout the day. This ensures efficient and comfortable refreshment service. For smaller conferences of under 60, the Third Floor Lobby provides adequate space.

## Capacities

### Fred Miller

Theatre	35
Cabaret	24
Boardroom	20
Classroom	12
Standing reception	30

### Lil Patrick

Theatre	25
Cabaret	18
Boardroom	16
Classroom	12
Standing reception	N/A

## AV facilities included in the room hire

Wireless Barco Clickshare connectivity

85" 4k Samsung screen

Laptop

WiFi

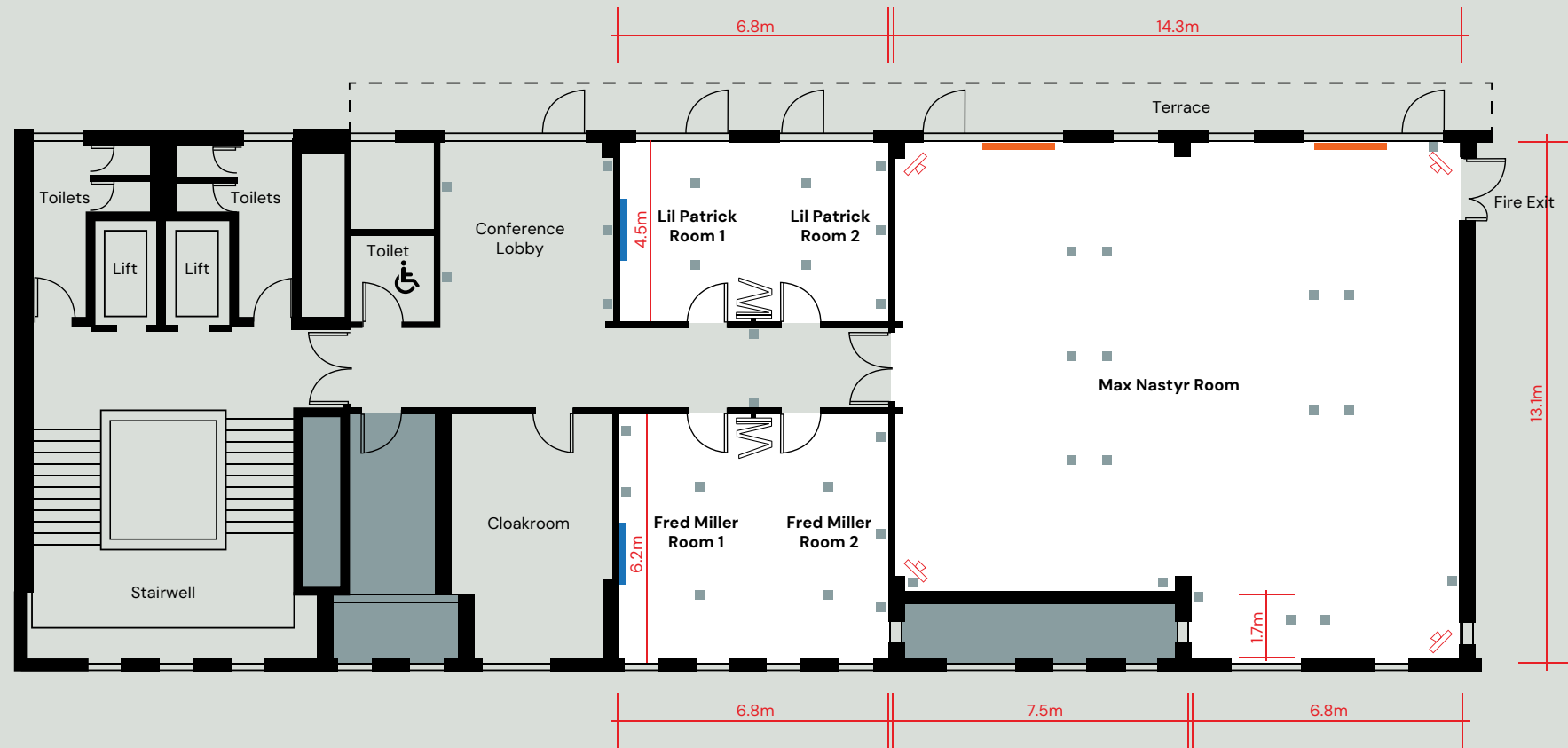
Hybrid meeting capabilities; ceiling mounted whole room microphone and high definition room camera





# Third Floor Suite

## Floor Plan



# Neighbourhood Room

Located at ground floor level with full accessibility, the Neighbourhood Room is a bright, flexible venue for up to 120 theatre or 80 cabaret. With natural light, a contemporary design, and direct access to an outdoor terrace, it's ideal for networking, exhibitions, fundraisers, product launches, and away days.

This versatile space is designed to welcome everyone, featuring its own all gender and accessible WCs, plus the added convenience of adjoining our Helpdesk area—perfect for a quick and easy registration process.

## AV facilities included in the room hire

HDMI and wireless Barco Clickshare  
connectivity

Laptop

WiFi

Single 1080p projector  
(not included in room hire)

PA system with up to 3 handheld  
microphones  
(not included in room hire)

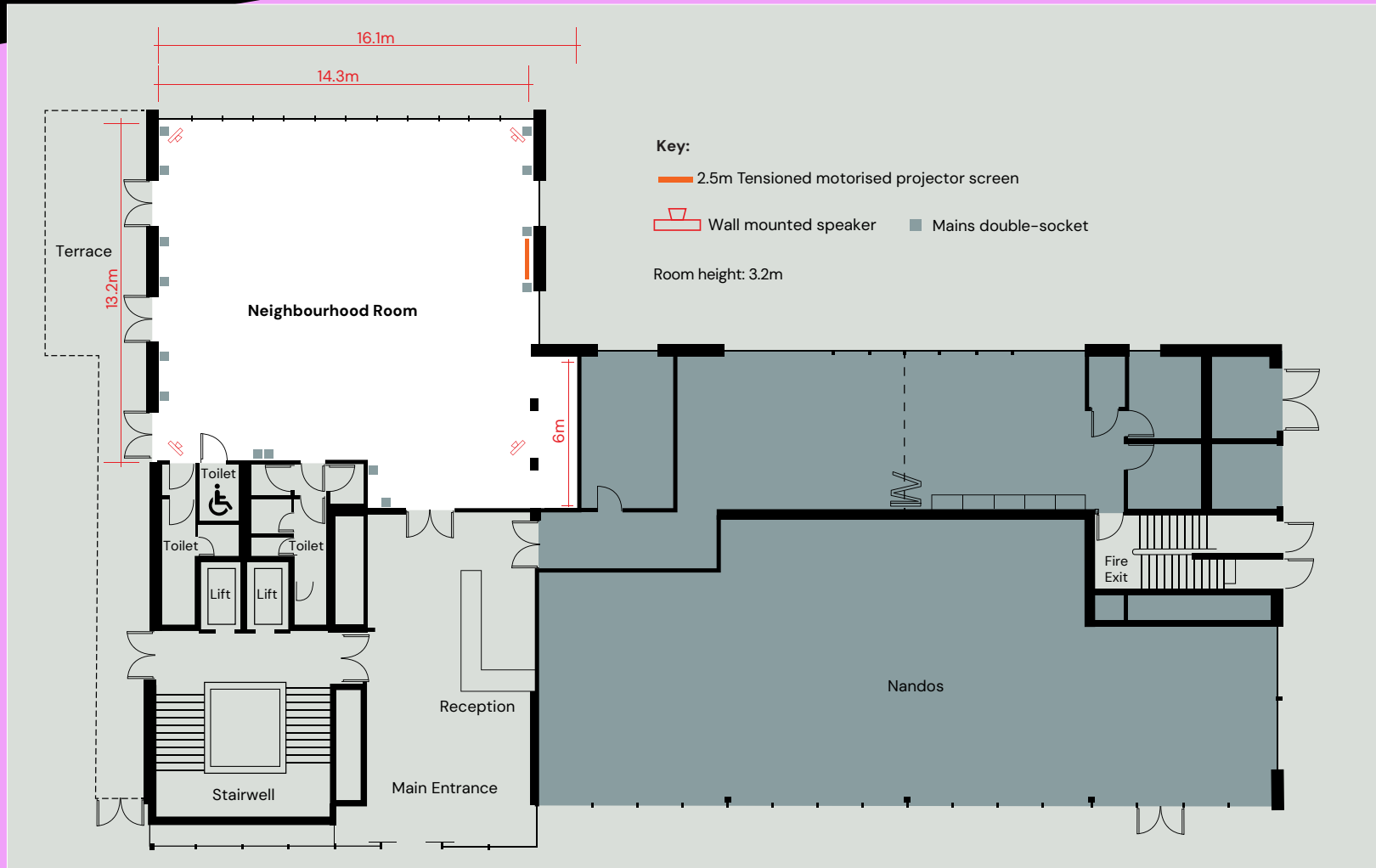
Room dimensions: 13.2m x 14.3m

## Capacities

Cabaret	80
Cabaret with stage	72
Banquet	104
Theatre	120
Hollow square	40
Boardroom U-shape	30
Classroom	76
Standing reception	160



# Neighbourhood Room Floor Plan





# South Bank Suite

From large-scale conferences of up to 160 in theatre style to workshops or team away days for up to 100 in cabaret, this versatile suite adapts to your needs with ease. Located on the lower level, it offers high ceilings, bright lighting, and complete privacy—ideal for focused, impactful events.

Equipped with dual 1080p projectors, a PA system with up to six microphones, and four high-definition cameras, it's built for seamless in-person or hybrid meetings.

The suite includes a spacious private foyer—perfect for serving refreshments—and an adjoining syndicate room, South Bank 3, which seats up to 20 in boardroom style. Need flexibility? A room divider allows you to split the space into three.



South Bank 3



Cabaret – South Bank Suite

## AV facilities included in the room hire

HDMI and wireless Barco Clickshare connectivity

Dual 1080p projectors

Laptop

WiFi

PA system with 6 handheld microphones & 1 lapel

Hybrid meeting capabilities; 4 high-definition hybrid capable cameras, ceiling mounted whole room microphones and speakers

Induction loop

## Capacities

## Suite Room 3

Cabaret	100	N/A
Cabaret with stage	90	N/A
Banquet	112	N/A
Theatre	160	25
Hollow square	50	20
Boardroom U-shape	40	15
Classroom	68	N/A
Standing reception	200	40

# South Bank Rooms 1 & 2

South Bank 1 and South Bank 2 can be booked individually offering flexibility without compromise. A soundproof divider ensures privacy—ideal for intimate meetings, training sessions, seminars, or away days.

Each room features two high-definition cameras, making hybrid meetings smooth and inclusive for remote participants.

These adaptable spaces are built to host a range of small to mid-sized events—from workshops and presentations to roundtables and team days.

AV facilities included in the room hire	Capacities	Room 1	Room 2
HDMI and wireless Barco Clickshare connectivity	Cabaret	42	42
Single 1080p projector	Banquet	56	56
Laptop	Theatre	70	70
WiFi	Hollow square	N/A	N/A
PA system with 3 handheld microphones (in South Bank 1 there is 1 lapel mic)	Boardroom U-shape	30	30
Hybrid meeting capabilities; 2 high-definition hybrid capable cameras, ceiling mounted speakers and microphones	Classroom	36	36
Induction loop	Standing reception	80	80
Air cooling system			

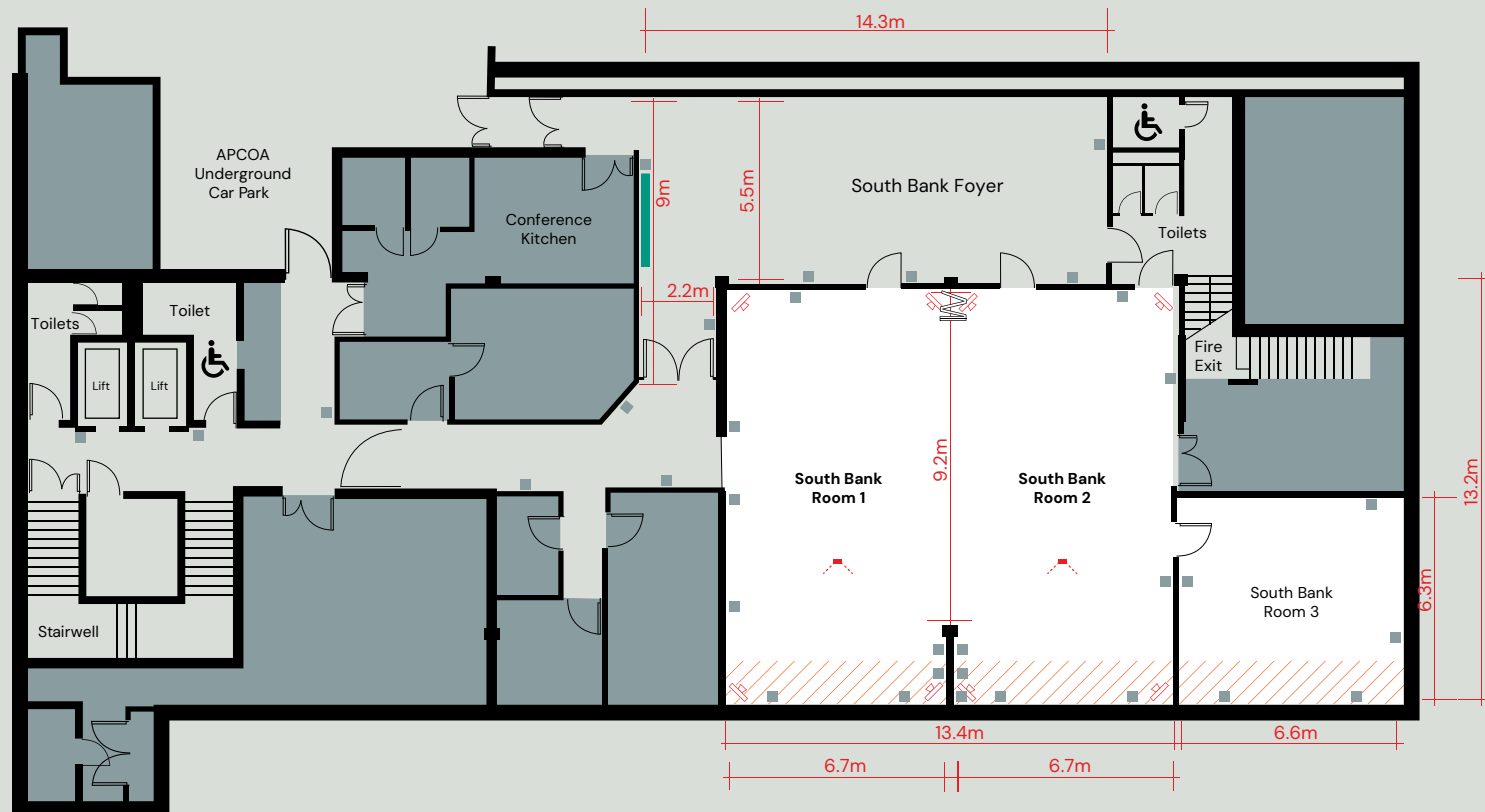


Theatre – South Bank 1



Cabaret – South Bank 1

# South Bank Suite & Rooms Floor Plan



Key: Partition wall Wall mounted speaker Ceiling mounted projector Ceiling pavement windows Coat rail Mains double-socket Room height: 3.2m

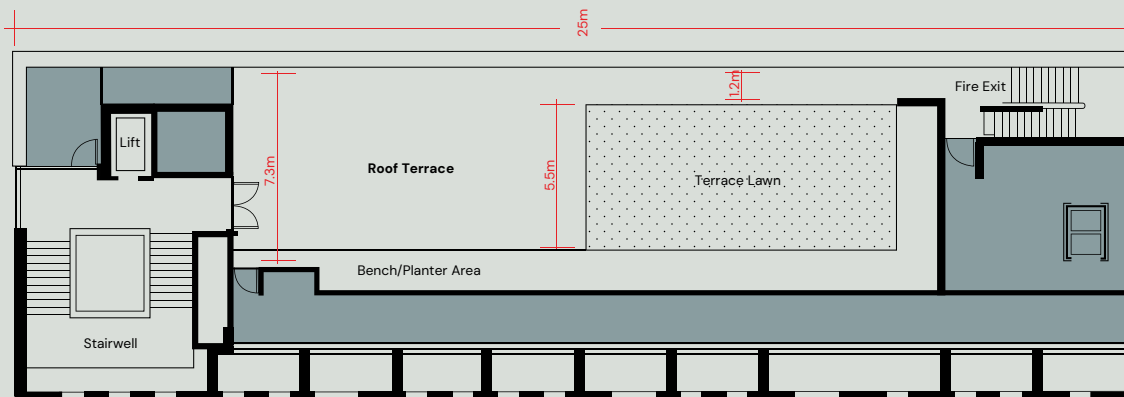


# Roof Terrace

With sweeping views of the City skyline, our spacious Roof Terrace is a standout spot for outdoor breakout sessions or post-meeting receptions during the warmer months.

Bookings require a minimum of 2 hours and are available until 7pm. To guarantee flexibility in all weather conditions, the terrace must be booked alongside an indoor space as a wet-weather contingency. If the weather doesn't cooperate and the terrace goes unused, there's no charge—just flexibility built-in.

## Site Plan

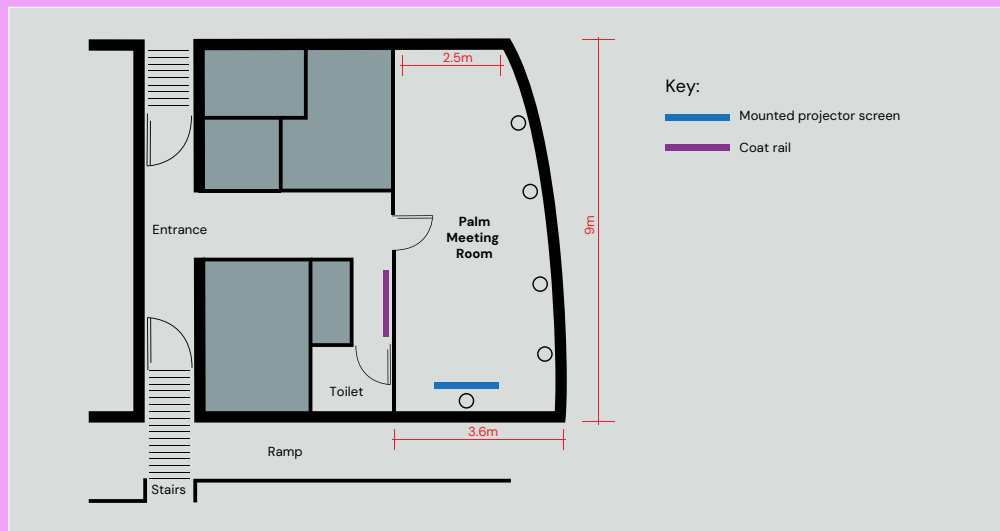


# Palm Meeting Room

Just two minutes from the main Conference Centre and steps from London's South Bank, the Palm Meeting Room is a modern, light-filled space.

The room features floor-to-ceiling natural daylight, air cooling system, contemporary AV tech, and access to a peaceful outdoor garden, ideal for energising meetings and breakout moments, especially in the warmer months.

## Floor Plan



## AV facilities included in the room hire

Ceiling projector and screen (connectivity via HDMI)

WiFi

Flipchart, pad & pen

Air cooling system



# Sustainability & accessibility

Coin Street Conference Centre is designed for everyone. Built with expert guidance and shaped by diverse voices, our space guarantees comfort and confidence for all.

We've proudly hosted events for SCOPE, EHRC, and Inclusion London, because for us, inclusion isn't optional, it's essential.

## What you'll find here:

Step-free street-level entrance with automatic doors

Spacious lobby and low-level Help Desk

All floors accessible via lifts large enough for motorised wheelchairs (up to 31" width)

Lifts for motorised wheelchairs (82cm x 200cm x 204cm)

Accessible toilets on every floor

Loading bay for easy drop-offs

8 accessible parking spaces (pre-book with our team)

AccessAble registered

## Hearing & visual support:

Hearing loops in Max Nasatyr, South Bank Rooms 1 and 2 and at Help Desk. Where not fitted or when additional equipment is needed this can be hired-in upon request.

Large-print signage, Braille lifts, audio announcements

Assistance dogs welcome (water provided)



Scan to find out more at AccessAble



## Sustainable features of our Conference Centre

Solar chimneys ventilate the building naturally and automatically

Energy efficient lighting that turns off automatically when an area is not in use

Mechanical ventilation in acoustically protected rooms that overrides the natural ventilation system only when required

Super-insulated façade panels, both roof and floors

Exposed thermal mass GGBS (sustainable aggregate) concrete ceilings

Extensive use of untreated FSC (Forestry Stewardship Council) certified timber

Balancing the requirements of a diverse range of users

DDA compliant, the Coin Street neighbourhood centre has been developed in consultation with a professional access consultant and in detailed dialogue with the building's users

Recycling of paper, card, plastic, glass, and food

Zero to landfill policy in place





# Catering

We're proud to partner with one of the UK's leading sustainable caterers at the Conference Centre. Eden serves fresh, homemade food using local, free-range, and responsibly sourced ingredients, all crafted with care for both people and the planet. Their sustainability commitment includes:

---

Sourcing seasonal, locally grown produce wherever possible

---

Prioritising British free-range meat, MSC-certified seafood, and responsibly sourced suppliers

---

Eliminating single-use plastics across operations

---

Composting all food waste and sending zero waste to landfill

---

Using only compostable, biodegradable, or fully recyclable packaging

---

Offering a 70% plant-based buffet menu to support healthier choices and lower-carbon dining

---

Continuously reducing their carbon footprint through recipe development and low-impact swaps

---

Supporting charities and community initiatives that create real social impact

---

SALSA accreditation

---

Actively progressing on their Net Zero pathway, verified by Net Zero Now and a healthier planet.



# Client testimonials



"Your team were excellent and provided us with fantastic support, they were incredibly receptive, and nothing was too much trouble... we will certainly be coming back to Coin Street"

**Age UK**

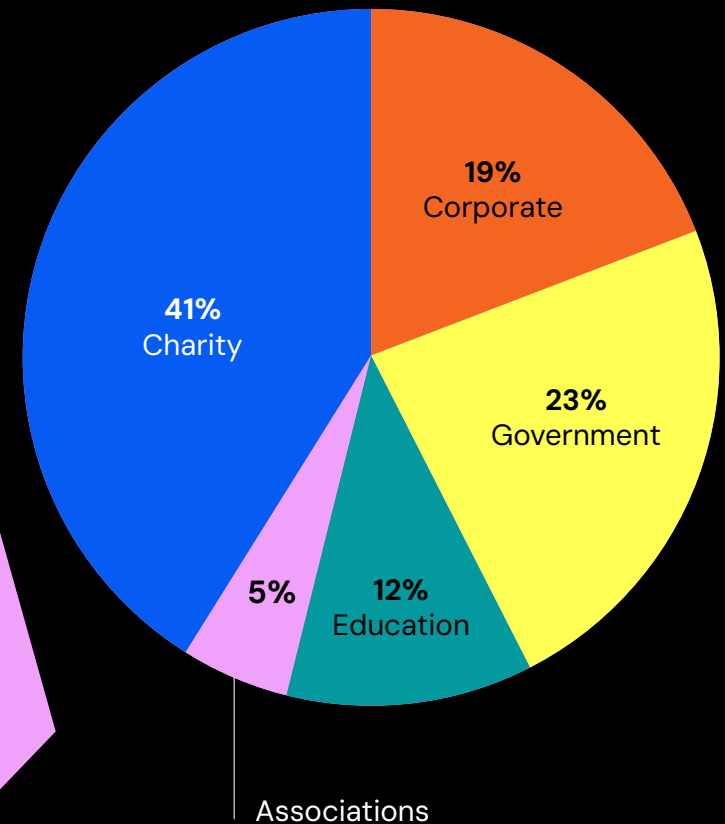
"A huge thank you to you and your team for your amazing support. I have received great feedback on the event, which was also due to your great friendly and helpful staff"

**Foreign & Commonwealth Office**

"The event ran seamlessly thanks in no small part to your team, and we've received lots of positive feedback on the venue (particularly the rooftop!), catering and all the Coin Street staff"

**Climate Policy**

Our client base by sector





# Additional spaces to hire

Perfectly positioned on the South Bank, these riverside spaces offer a dynamic platform for launch events, immersive activations, art installations, public exhibitions, filming, and photoshoots.

## **Bernie Spain Gardens**

Nestled beside the Thames and Oxo Tower Wharf, this expansive 1000sqm stretch of riverside park offers uninterrupted outdoor space. Available on its own or paired with the neighbouring jetty, it's ideal for open-air activations and public events.

## **Doon Street Car Park**

A versatile 2000sqm open-air site with no height restrictions, located between the London IMAX, National Theatre, and ITV Studios. It's a blank canvas for large-scale outdoor experience.

## **Oxo Gallery**

A riverside venue in the heart of Oxo Tower Wharf's creative community, showcasing a dynamic programme of exhibitions and cultural events.

## **Observation Point**

Overlooking the Thames with iconic views of St Paul's and the City, this 300sqm space offers a striking backdrop for events that demand attention.

## **Oxo Tower Wharf Courtyard**

An urban courtyard with character—perfect for installations and pop-up experiences in a unique South Bank setting.

## **Queen's Stone**

A 200sqm semi-circular cobbled site facing the river, framed by trees and parkland. A hidden gem with historic charm and visual impact.

## **Riverside Walkway**

Tree-lined and Thames-facing, this scenic stretch is ideal for large-scale exhibitions and intimate outdoor installations.

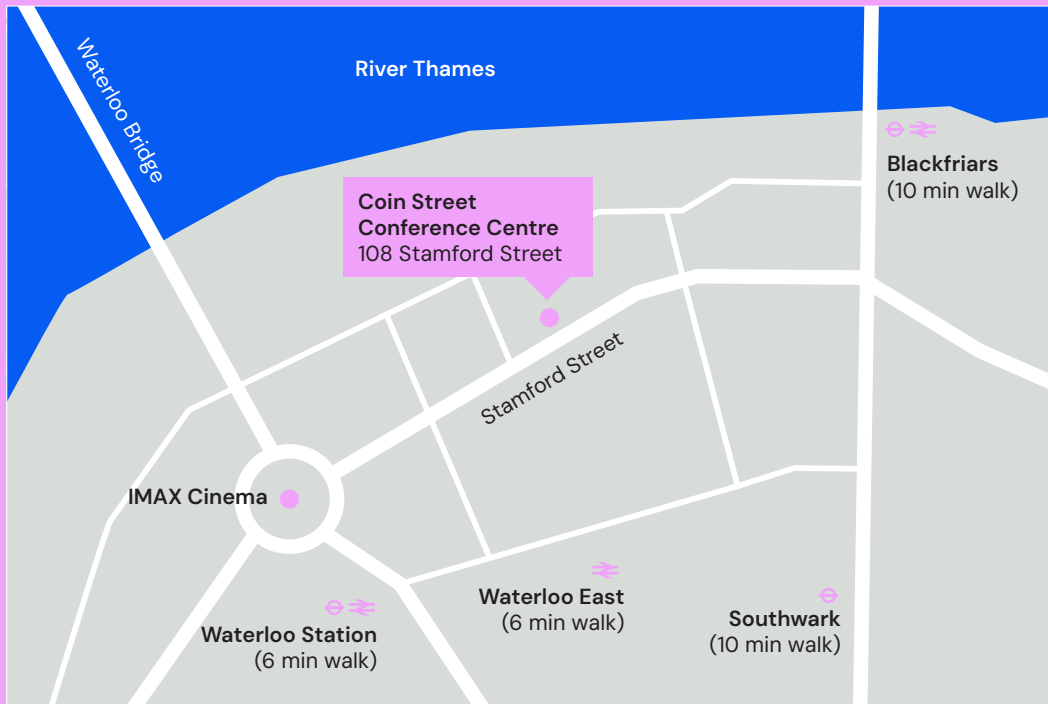
## **Riverside Grass**

Adjacent to the Riverside Walkway, this 600sqm green space offers stunning river views and room to scale. A natural stage for festivals and experiential events.





# Finding us & get in touch



## How to find us

### Tube

Waterloo (Northern, Bakerloo, Jubilee, Waterloo & City lines)  
6 minutes walk

Southwark (Jubilee line)  
10 minutes walk

Blackfriars (Circle and District lines) 10 minutes walk

### Bus

40, 63, 363 to Stamford Street  
381 to Blackfriars Road  
59, 68, 76, 139, 172, 176, 188, 243, 341, SL6 to Waterloo Station

### Train

Blackfriars, Waterloo or Waterloo East

### Boat

Blackfriars Millennium Pier or Festival Pier

### Car

Whilst we encourage travel by public transport, there is secure underground car parking adjacent to the centre.

Discounted rates available for conference bookers



## Get in touch

[conferences@coinstreet.org](mailto:conferences@coinstreet.org)  
[coinstreet.org](http://coinstreet.org) | 020 7021 1650

Coin Street 