

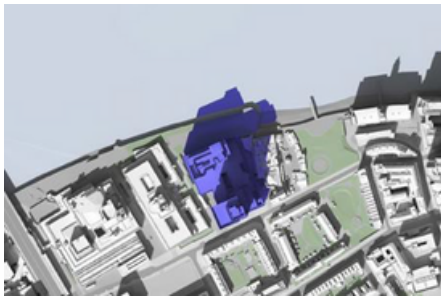
BUILDING BACK WORSE – ON LONDON’S SOUTH BANK!

Proposals for the redevelopment of ITV’s former home on London’s South Bank are being heavily criticised by its neighbours and the wider community. [We urgently need you to join with us](#) to raise your individual objections to underline how unpopular this proposal is and the impact on individual residents and families across the neighbourhood.

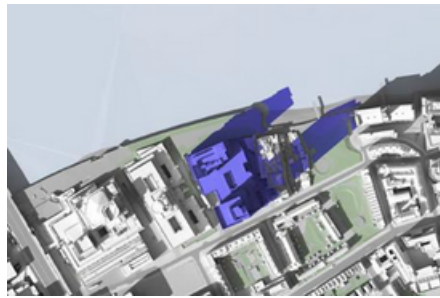
“Excessive, overbearing, and overly dominant.”

Our main concerns:

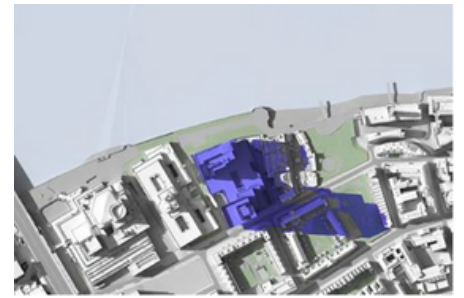
- The scale, bulk and siting of the proposed development is [excessive, overbearing and overly dominant](#).
- The [impacts on daylight](#) received by adjacent Coin Street housing co-operatives will be [severe](#).
- The riverside walkway to the north of the proposed development currently enjoys sunshine during lunchtime. This and most of nearby Bernie Spain Gardens would be [cast into shadow](#) by the proposed development, [significantly harming these spaces](#).
- This is not just a local issue - it's a national issue: South Bank's riverside walkway is currently [one of the most visited areas of London](#). The proposed over-development of ITV’s former home threatens the special qualities and success of London’s Cultural Quarter on South Bank.
- The claimed ‘public’ benefits of the development - the views out and terraces - would only be enjoyed by its occupants. These [do not justify the harm](#) the proposed development will cause to the South Bank conservation area, to adjacent housing, to riverside and local views, and to existing public amenities like the riverside walkway and Bernie Spain Gardens.
- The former London Television Centre building is already one of the tallest in the Conservation Area, yet these proposals aim to increase the volume of the building on this site by [over 224%](#).



21 March at 13:00 GMT



21 March at 15:00 GMT



21 June at 18:00 GMT

Predicted overshadowing of the riverside walkway and Bernie Spain Gardens.



Computer generated images of the proposed development. Views from: Stamford Street (left and middle) and Upper Ground (right).

All images extracted from the 72 Upper Ground planning application: Environmental Statement, July 2021.

TOGETHER WE CAN STOP THIS!



Have your say today!

This is expected to go before the Lambeth planning committee very soon, **don't miss your chance to have your views heard.**

The simplest thing for you to do is use the "make a comment" feature on the planning application and state your objection at www.bit.ly/30ixex3 or scan this QR code (left). For details of the actual planning application, visit www.bit.ly/3i9LyQb. The site address is **60 - 72 Upper Ground SE1 9LT.**

Please email 72upperground@coinstreet.org

to let us know you have made a comment.

For more information, see our website at:

www.coinstreet.org/72-upper-ground or email us at 72upperground@coinstreet.org

