

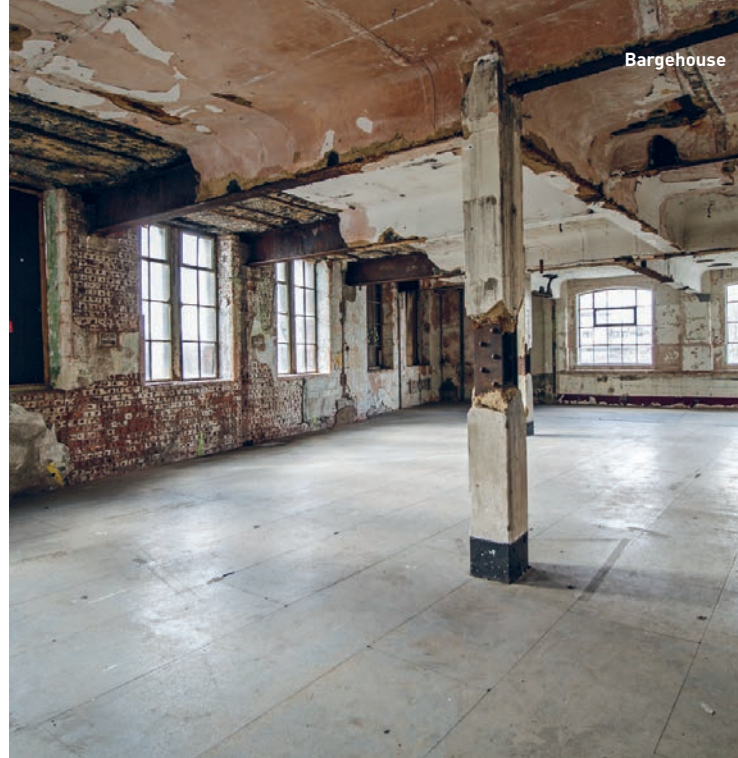
CREATIVE
LONDON



TOWER
WHARF

EXHIBITION SPACES

Four distinct spaces to hire at Oxo Tower Wharf



Oxo Tower Wharf is owned and managed by Coin Street Community Builders who transformed the building from a largely derelict site into an award-winning mixed use development of co-operative homes, retail design studios, restaurants, cafes and exhibition spaces.

Located on the South Bank, the cultural heart of London, Oxo Tower Wharf's riverside exhibition and event spaces are well known destinations for innovative cultural and artistic activities. Frequenting by a diverse audience of international and domestic visitors, students, local businesses and residents, our vibrant exhibitions programme attracts loyal visitors always eager to discover what's on at Oxo Tower Wharf.

04. Oxo Tower Wharf

A thriving creative hub with a wide range of exhibition spaces and retail design studios

05. gallery@oxo

Contemporary gallery with white walls and floor to ceiling windows

08. Bargehouse

Huge former warehouse perfect for large-scale exhibitions

11. G11

Intimate exhibition space

13. Courtyard & Platform

Open-air blank canvas exhibition or installation space

15. Marketing support

Discover how Coin Street can help promote your exhibition

16. Prices and helpful information

Rates, fees and venue supervision

17. About Coin Street

Helping to make our neighbourhood inspiring

18. Additional spaces to hire

Outdoor sites and conference centre details

20. Contact us

How to apply

Breathtaking exhibition spaces to hire in the heart of creative London



WATERLOO STATION

TATE MODERN

BARGEHOUSE

COURTYARD & PLATFORM

HAYWARD GALLERY

SOUTHBANK CENTRE

NATIONAL THEATRE

GABRIEL'S WHARF

GALLERY@OXO

G11

BLACKFRIARS STATION



An average of
30,000
visitors walk along the
Riverside Walkway
every day*

Home to over **25**
designer-maker
studios, event spaces
and the renowned OXO
Tower Restaurant,
Bar & Brasserie

South Bank is home to
56,000 employees
& **11,000**
residents

Oxo Tower Wharf
is a creative hub and **5**
minutes walk from both
the Southbank Centre
and Tate Modern

**“We’ve been quite astounded by the incredible
footfall; people just can’t resist the temptation
to stroll in after they catch a glance of the show
when walking past.”**

Sightsavers International

GALLERY@OXO

Showcasing the best photography, contemporary design, architecture and issue-based exhibitions, gallery@oxo attracts large audiences.

With floor to ceiling windows overlooking the River Thames, gallery@oxo is a bright, airy, open space, highly visible to visitors on London's prime cultural trail between Southbank Centre, Hayward Gallery and Tate Modern.

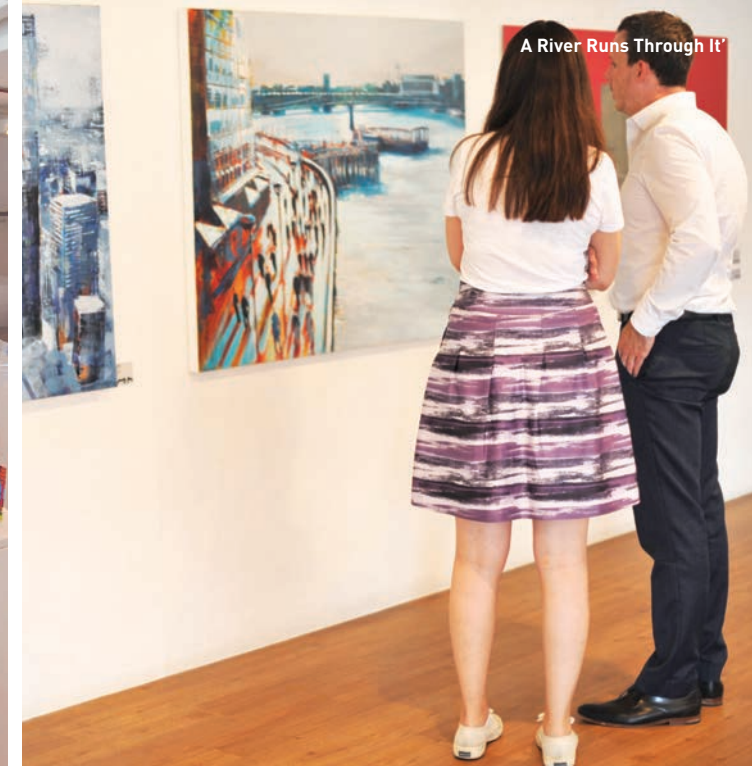
“For us Oxo Tower Wharf’s biggest draw is that the combination of the size of the venues and the location in the heart of one of London’s creative neighbourhoods is unmatched elsewhere.”

Brunel University



GALLERY@OXO VENUE SPECIFICATIONS

- > 140m²
- > Approx. 40 linear metres of wall space
- > Max capacity 150
- > Track lighting
- > 13 amp power
- > Large kitchen and storage area
- > Ground floor level
- > Riverside and Courtyard side entrances
- > Floor to ceiling windows
- > Wheelchair accessible
- > Wi-Fi
- > CAD plans available on request



With direct access from the Riverside Walkway, the space is primed for potential visitors.

“The space worked incredibly well for our interactive exhibition, private views, panel discussions and round table events. It is incredibly central, ensuring a good footfall and is very reasonably priced.”

Daina Rudusa, CARE International



020 7021 1650
galleries@coinstreet.org
oxotower.co.uk/venue



BARGEHOUSE

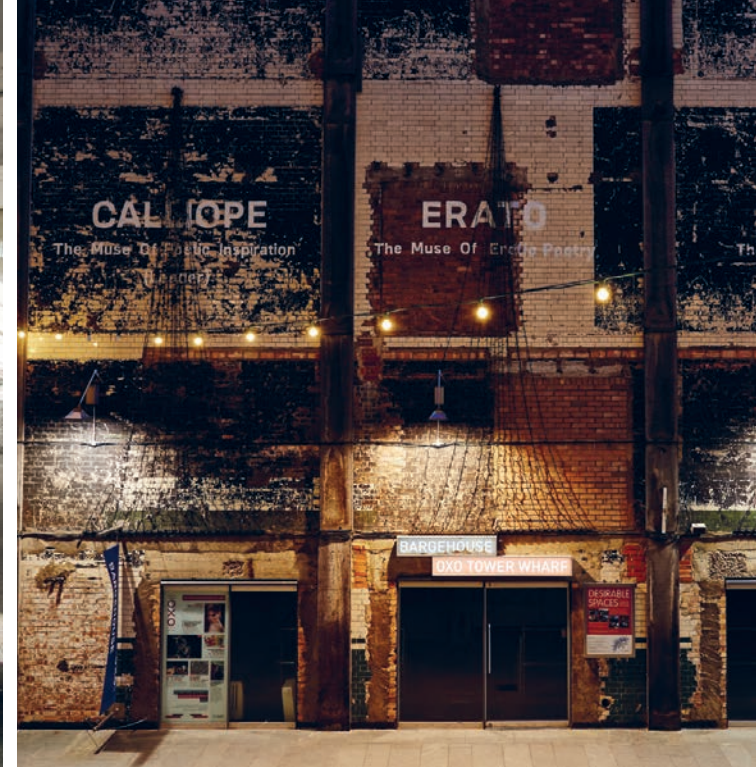
Bargehouse is a vast raw industrial space ready to be transformed by large scale group exhibitions, design showcases, immersive experiences, theatre performances, art fairs and more.

As a distinctive warehouse venue, Bargehouse provides an exciting backdrop for any exhibition. The vast, untouched building boasts 1,400m² of highly adaptable space over five floors, providing the opportunity to create a unique narrative, not always possible in traditional gallery settings.

“The team were so helpful, supportive and professional in aiding us to produce a record breaking fundraising event. The versatile exhibition space was the perfect setting for the array of artworks we had been donated”
Samuel Morton, Freedom from Torture



BARGEHOUSE VENUE SPECIFICATIONS



- › Five floors of exhibition space
- › 13 rooms
- › 1,400m² in total
- › Max capacity 450
- › Exposed brickwork
- › Original features
- › 3 phase & 13 amp power
- › Track lighting
- › Wi-Fi
- › Wheelchair accessible to second floor
- › Licensed
- › CAD plans available on request

Crammed with original features and interesting textures, Bargehouse lends itself perfectly to powerful exhibitions.



FloatArt



London Illustration Fair



Designersblock



Sluice Art Fair



University of Cambridge Architecture Society



University of the West of England

020 7021 1650
galleries@coinstreet.org
oxotower.co.uk/venue

G11

Set in and amongst our designer-maker studios on the Courtyard of Oxo Tower Wharf, G11 is ideal for individual artists, designers or small groups looking for an affordable showcase spot.

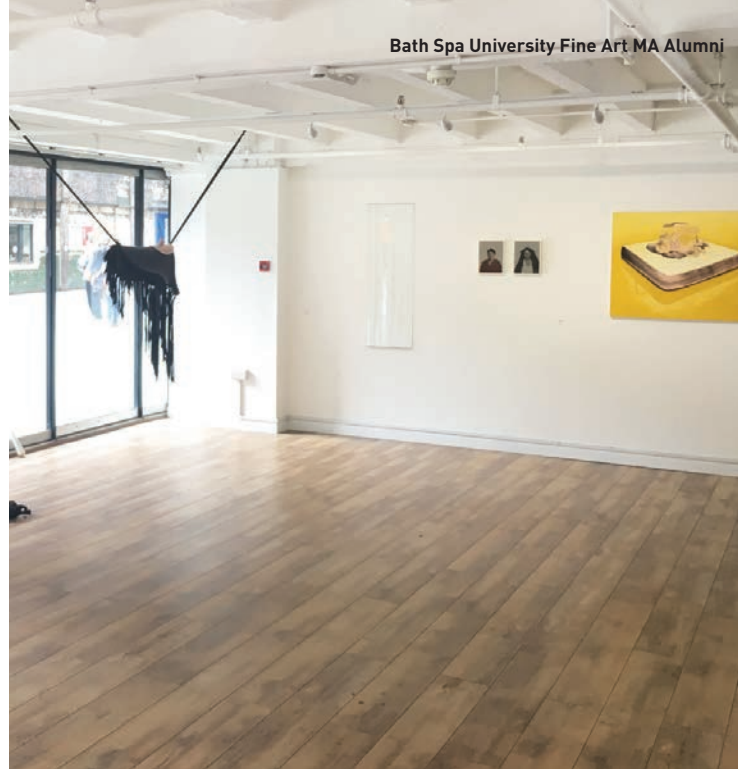
G11 provides 65m² of white walled space, perfect for exhibitions, pop-up shops, workshops, talks and immersive experiences. G11 is also an ideal bolt-on option for any of our other venues.

“We needed a flexible, versatile and highly visible display and seminar space that our students could completely transform. G11 was ideally situated on the South Bank, and proved exceptionally adaptable to the purposes we demanded of it.”
Robert Knifton, Kingston University



G11 VENUE SPECIFICATIONS

- > 65m²
- > Max capacity 70
- > Ground floor
- > Floor to ceiling windows
- > Kitchen and storage area
- > 13 amp power
- > Wi-Fi
- > Track lighting
- > Wheelchair accessible
- > Display furniture available on request
- > CAD plans available on request



A blank canvas, ready to be transformed into a self-contained pop-up project space.

“G11 was ideal for showing my latest ceramics project. The unit was easily transformed into a wonderful display space for my works as well as providing a great atmosphere for my private view.”

Anne Isaksson



COURTYARD & PLATFORM

Connecting all areas of Oxo Tower Wharf, Courtyard & Platform make for the perfect location to host any form of outdoor exhibition.

Courtyard & Platform boast endless possibilities for exhibitors; from sculpture and lighting installations, to pavilions and exhibitions, this versatile outdoor site benefits from the large footfall passing along the South Bank. The open air, slate paved space is visible from both the busy Riverside Walkway and surrounding studios, galleries and restaurants of Oxo Tower Wharf, easily drawing in large, diverse crowds.

“Courtyard was the perfect setting to inspire the bustling South Bank community with our photo exhibition on The Amahoro Generation. The audience was engaged and diverse, and being located in one of London’s cultural hotspots gave us fantastic exposure.”

International Alert



COURTYARD & PLATFORM VENUE SPECIFICATIONS

- > Courtyard: approx. 2,266m²
- > Platform: approx. 525m²
- > Slate paving
- > 1x8 + 4x13 amp single phase supplies
- > Water supply available
- > Vehicle access adjacent to site on roadside (Council permits required)
- > CAD plans available on request



A large site for sculpture, installations and outdoor activations, ready for creative and curious audiences.

“Platform was the ideal bolt-on space to expand our Imagination Lab at G11, allowing us to bring our Mini Maker Fair to life in a fresh outdoor setting.”

Institute of Imagination

020 7021 1650
galleries@coinstreet.org
oxotower.co.uk/venue

MARKETING SUPPORT

Exhibitors at Oxo Tower Wharf can benefit from a range of marketing and promotional opportunities to maximise audience reach. The Coin Street marketing team will work with you to discuss all of the options available and how our opportunities can enhance your promotional strategy.

Subject to deadlines, print dates and availability we may be able to offer:

- > The use of up to 5 (dependent on venue) back-lit poster sites around the Coin Street site.
- > Inclusion in 6 back-lit 'What's on at Oxo' posters around the Coin Street site.
- > Inclusion in our monthly 'What's on' e-newsletter
- > Inclusion in our general 'What's on at Oxo' press release
- > Event listing on www.oxotower.co.uk and www.coinstreet.org

- > Promotion via Twitter and Facebook (@OxoTowerWharf)
- > A potential slot on the digital billboard overlooking Waterloo Bridge and roundabout
- > Promotion via the South Bank London network

Each of our spaces has a comprehensive style guide containing marketing guidelines and further details on the range of support we can offer if desired.



“The team at Coin Street were incredibly flexible in accommodating our many ideas, were easy to reach, and a pleasure to work with.”
Daina Rudusa,
CARE International

020 7021 1650
galleries@coinstreet.org
oxotower.co.uk/venue

PRICES AND HELPFUL INFORMATION

DRY HIRE RATES* STARTING FROM:

gallery@oxo

£3,850+VAT per week

Bargehouse

£4,200+VAT per week

G11

£910+VAT per week

Courtyard & Platform

Price on application

Our hire weeks run Tuesday – Monday inclusive of set up and de-rig. Exhibitions must be open to the public 11am-6pm daily. Rates for ticketed and private events are also available on enquiry.

VENUE SUPERVISION

Dependent on venue, clients are required to have a Venue Supervisor.

Possessing a wealth of site knowledge, the Supervisors not only provide on-site guidance on the day but also act as a dedicated liaison for logistical and technical queries during the planning process.

Venue Supervisors must be present during all set up and de-rig activities and may also be required during events deemed sensitive, guidance on application.

PREFERRED SUPPLIERS

We work with a list of preferred suppliers for catering, security, AV and cleaning. Details available on application.

PROPOSALS

All exhibitions at Oxo Tower Wharf are subject to an application process. Clients must submit an exhibition proposal outlining:

- > Exhibition objectives
- > Artists/practitioners involved
- > Target audience
- > Associated PR or marketing planned
- > Whether the exhibition coincides with wider activities (i.e. festivals, film season, another exhibition at a different venue etc.)
- > Examples of work on display

<http://www.oxotower.co.uk/wp-content/uploads/2013/11/Oxo-Tower-Wharf-Events-Brochure-web.pdf>

*Prices correct at time of publication (December 2016)



“The team at Coin Street were great in facilitating our tight schedule and helped ensure that the event was a great success for our students.”

Robert Knifton, Kingston University

020 7021 1650
galleries@coinstreet.org
oxotower.co.uk/venue



Bernie Spain Gardens



Coin Street neighbourhood centre



Oxo Tower Wharf

ABOUT COIN STREET

Oxo Tower Wharf is owned and managed by Coin Street Community Builders (CSCB). CSCB is a social enterprise and our aim is to make our neighbourhood a great place to live, work in, and visit.

- › By choosing Coin Street's sites for your exhibition you are investing in the future of the South Bank and the local neighbourhood.
- › CSCB has transformed a largely derelict 13 acre site into a thriving mixed-use neighbourhood

By using our venues you are investing in our community

- › CSCB has built new co-operative homes; completed the South Bank Riverside Walkway; created Bernie Spain Gardens; refurbished Oxo Tower Wharf for mixed uses; hosts conferences; organises festivals and events; and provides childcare, family support, learning, sports and a wide range of other community programmes.
- › Income is generated from a variety of sources including the hire of retail and catering spaces, event spaces, meeting room spaces and conference venue spaces.
- › CSCB is a company limited by guarantee established by local residents in 1984 following a campaign against large scale office proposals.
- › Profits are not distributed but are ploughed back into Coin Street's public service objectives.

ADDITIONAL SPACES TO HIRE

OUTDOOR SPACES

We offer a diverse selection of outdoor venue spaces, ranging from 80m² - 5000m², situated in the prime location of London's South Bank. From expansive grassy garden spaces such as Riverside Slice, to cobbled riverside event spaces such as Observation Point, that offer breathtaking iconic views of the city.

The spaces host a diverse range of events including experiential product launches, international tourism promotions, sampling events, cultural and food festivals, outdoor exhibitions and awareness raising events.

coinstreet.org/venue-hire/outdoor-spaces
events@coinstreet.org

COIN STREET CONFERENCE CENTRE

Situated just a short walk from Waterloo Station and Oxo Tower Wharf, the Coin Street Conference Centre has a number of contemporary purpose-built conference and meeting rooms. With a diverse range of users, the centre offers the perfect venue for seminars, training events, board meetings, conferences or product launches. The flexible rooms allow for a variety of configurations, accommodating between 6 and 250 people.

coinstreet.org/conferences
conferences@coinstreet.org



Coin Street Conference Centre



Shrek's Adventure London, Observation Point



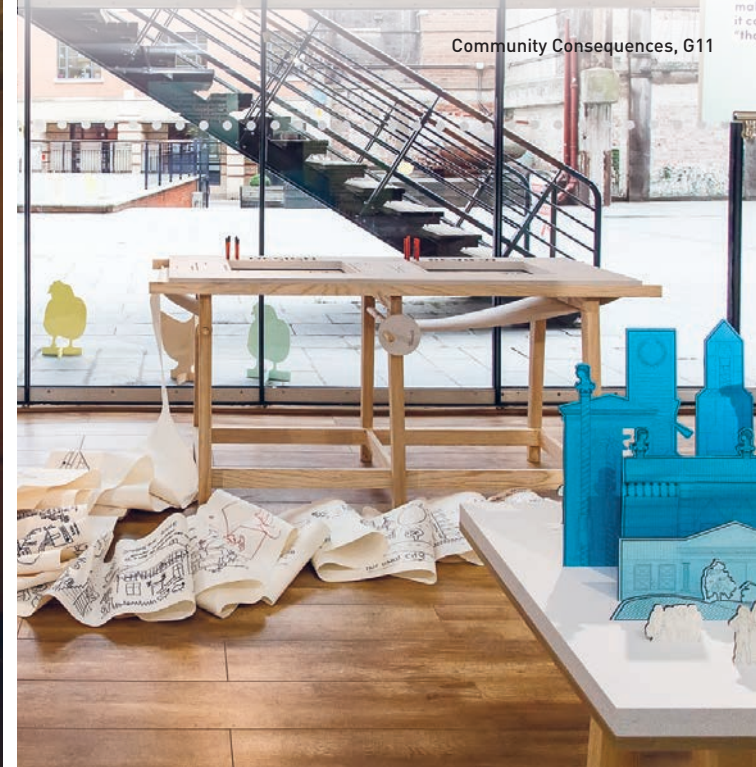
Roof Terrace, Coin Street Conference Centre



Mr Men Little Miss Mini Museum, gallery@oxo



Arts University Bournemouth, Bargehouse



Community Consequences, G11



Grimm Productions, Bargehouse



Institute of Imagination, Platform



Studio Abba, gallery@oxo

020 7021 1650
galleries@coinstreet.org
oxotower.co.uk/venue



For more information or to arrange a site visit, contact the events team
galleries@coinstreet.org
oxotower.co.uk | 020 7021 1650

Oxo Tower Wharf, Bargehouse Street,
South Bank, London SE1 9PH

